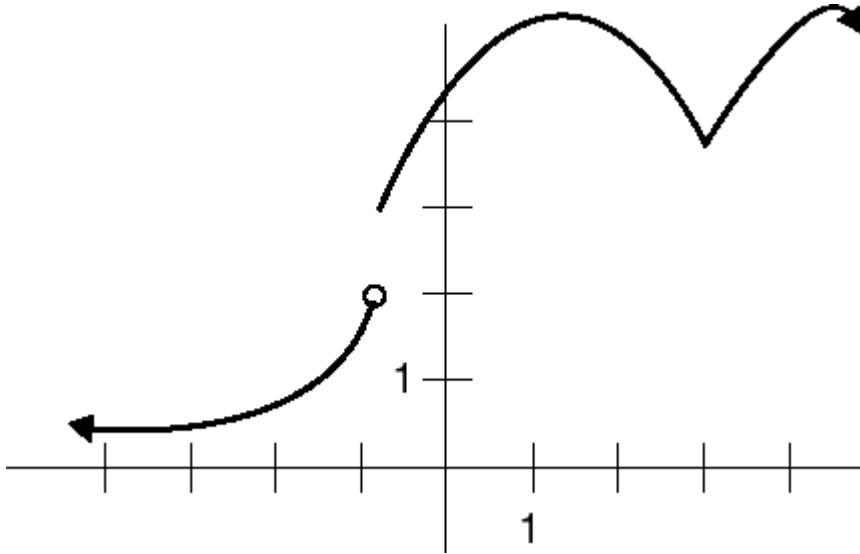


Answer the questions concerning differentiability and continuity of the function pictured below.



1. Is the function differentiable at the following values of x ?

- a.) $x = -3$
- b.) $x = -1$
- c.) $x = 0$
- d.) $x = 2$
- e.) $x = 3$

2. Is the function continuous at the following values of x ?

- a.) $x = -3$
- b.) $x = -1$
- c.) $x = 0$
- d.) $x = 2$
- e.) $x = 3$